



Start LIVING.



NOT JUST A *home* IMPROVEMENT,

A *life* IMPROVEMENT.

Op·ti·mize·d
/Conservatories/
by LIVINGSPACE SUNROOMS^{LLC}

©2013 LivingSpace Sunrooms

Op·ti·mize·d
/Conservatories/ *by* LIVINGSPACE SUNROOMS^{LLC}

Design YOUR SUNROOM



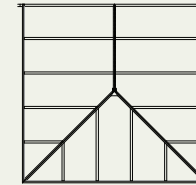
EDWARDIAN



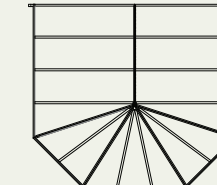
VICTORIAN

STYLE

EDWARDIAN



VICTORIAN



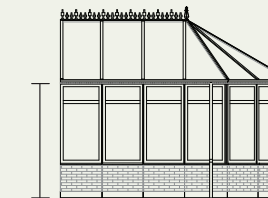
SIZE

- 9'X12'
- 12'X12'
- 15'X15'

- 11'X12'
- 14'X15'
- 18'X17'

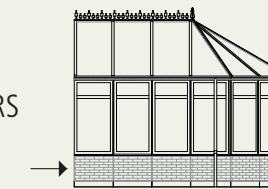
WALL HEIGHT

- 7' WALLS NO TRANSOMS
- 7' WALLS WITH TRANSOMS
- 8' WALLS WITH TRANSOMS



KNEE WALL

- EXISTING KNEE WALL
- KNEE WALL TO BE STICK BUILT BY OTHERS
- 6" ECOGREEN KNEE WALL

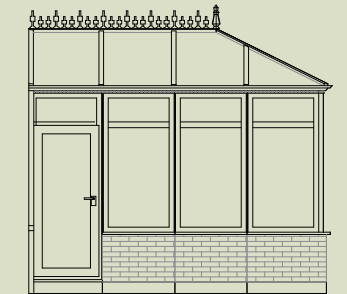


FENESTRATION

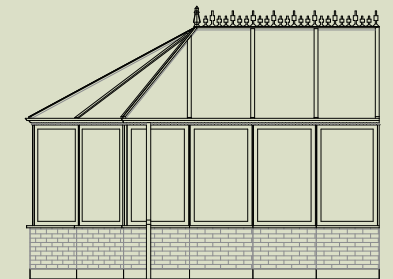
- EUROVENT PACKAGE
Up to 6 Euro Awnings with fixed screens (used on transoms only)
- OPEN AIR PACKAGE
Up to 3 operable windows with retractable screens and a single entry door
- PREMIUM OPEN AIR PACKAGE
Up to 5 casement windows with retractable screens and a French door

ROOF GLAZING

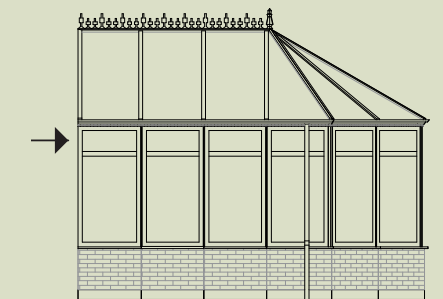
- OPAL HEATGUARD POLYCARBONATE
- GLASS



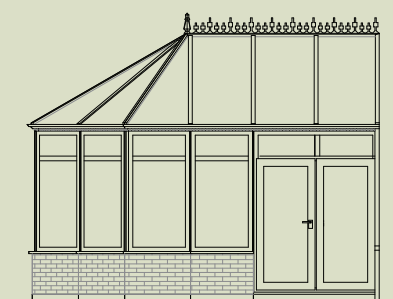
EDWARDIAN



VICTORIAN



TRANSOMS



FRENCH DOOR



EUROVENT



OPEN AIR



SINGLE ENTRY DOOR



OPAL HEATGUARD POLYCARBONATE



GLASS